



**Professor Ramesh Thakur**

***Our Enemy, The Government***



***OUR ENEMY, THE  
GOVERNMENT:  
COVID AND THE EXPANSION  
AND ABUSE OF STATE POWER***

**RAMESH THAKUR**

- **DIRECTOR, CHD AUSTRALIA**
- **SENIOR SCHOLAR,  
BROWNSTONE INSTITUTE**
- **EMERITUS PROFESSOR, THE  
AUSTRALIAN NATIONAL  
UNIVERSITY**
- **FORMER ASSISTANT  
SECRETARY-GENERAL, UNITED  
NATIONS**

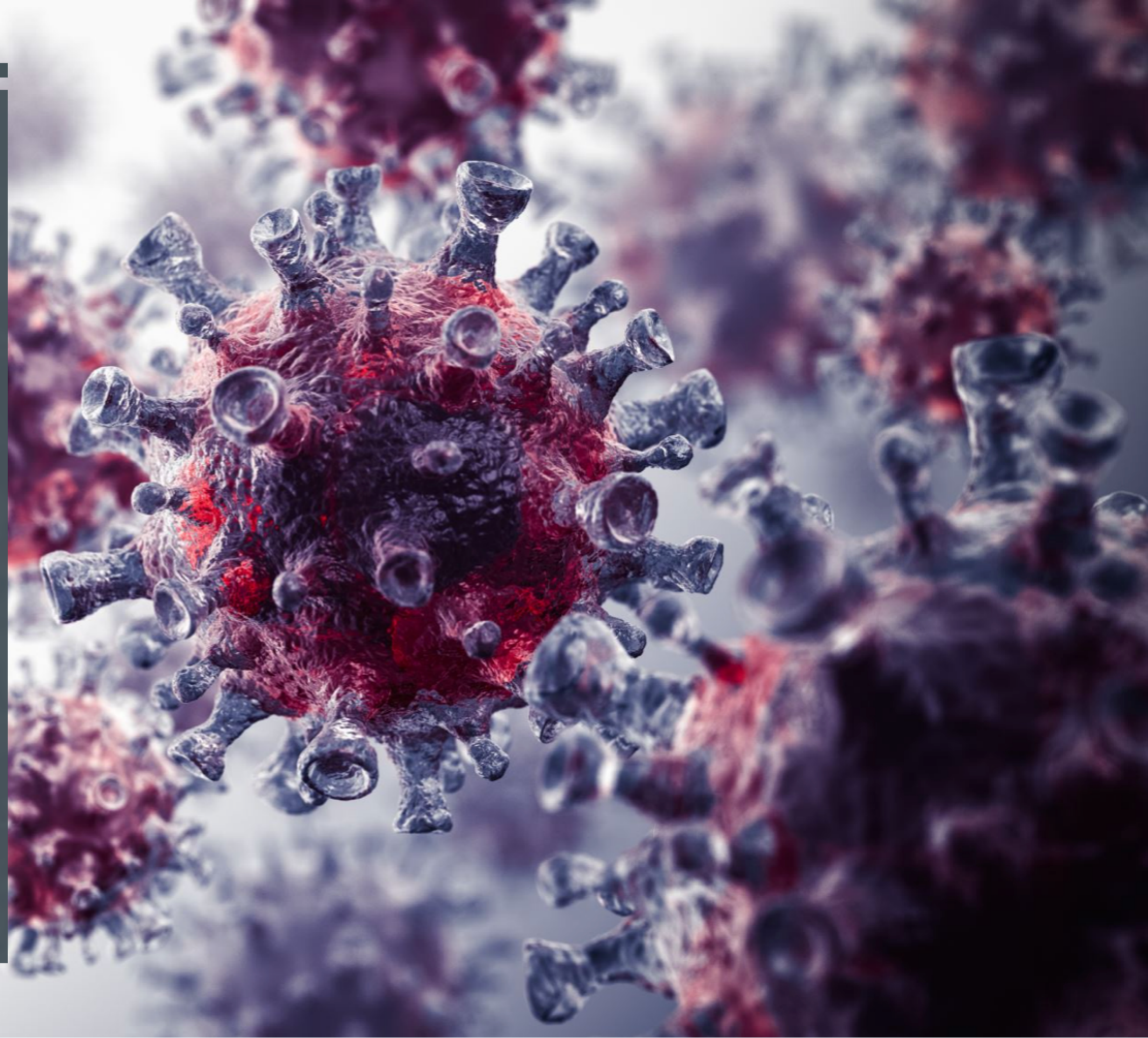
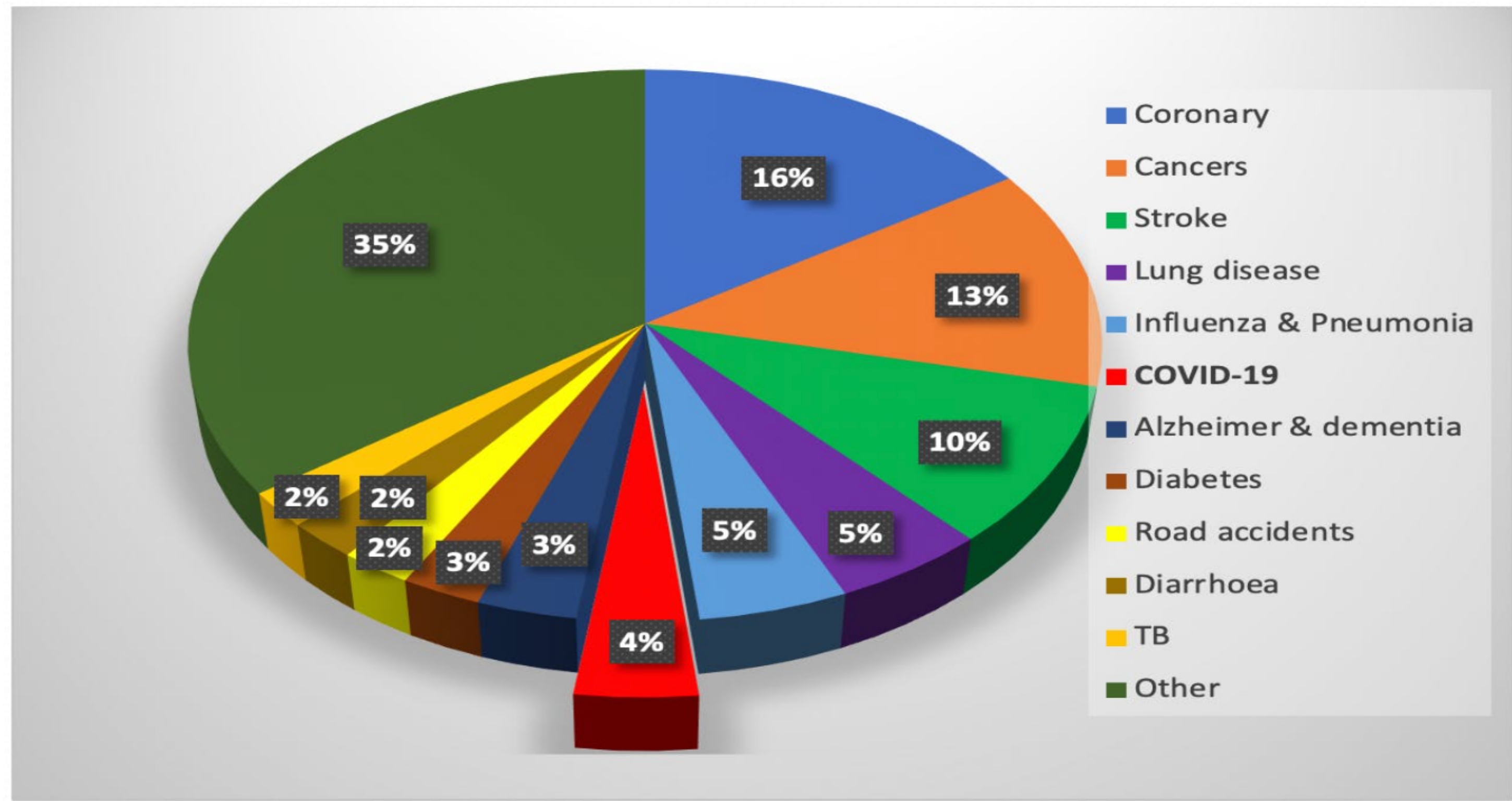


Figure 1: Leading causes of deaths in world, 1 March 2020–26 July 2021





---

GOOD POLICY PROCESS  
DELIVERS BETTER  
POLICY OUTCOMES

---

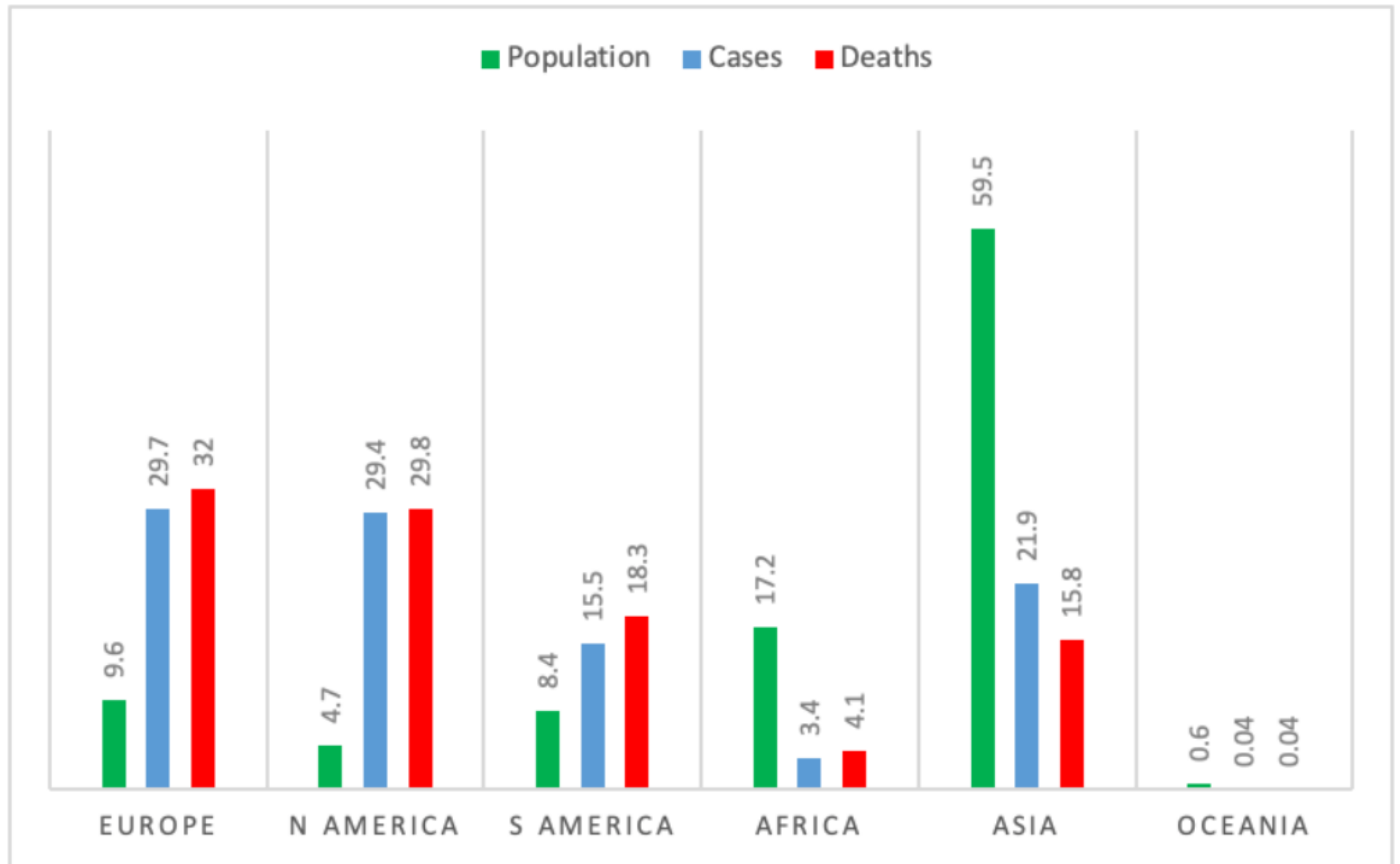
# A WORLD IN PANIC



An aerial photograph of a vast, flat landscape, likely a wetland or marsh. The terrain is covered in dense, low-lying vegetation that has turned a deep brownish-green color, suggesting a late autumn or winter season. A single, narrow, winding river or stream flows through the center of the landscape, its water reflecting the light. The river starts from the top center and meanders towards the bottom left. The overall scene is one of a remote, natural environment.

COVID IN THIRD  
WORLD CONTEXT

**Figure 2: Population and COVID-19 cases and deaths by continents' share of world totals, 23 February 2021**



A close-up photograph of a chessboard. Several dark wooden chess pieces are standing upright on the board. In the foreground, a white chess piece is lying on its side, suggesting it has been captured or is a fallen king. The background is softly blurred, showing warm, circular bokeh lights, possibly from a sunset or indoor lighting. The overall mood is contemplative and strategic.

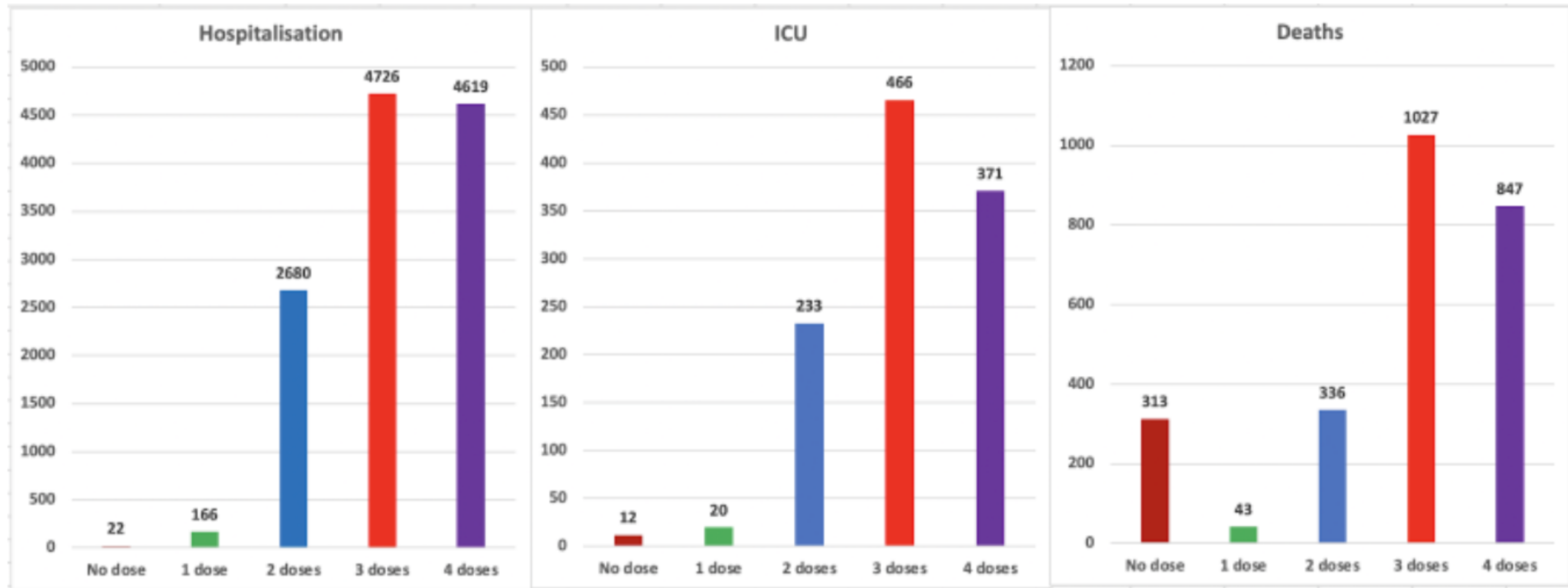
THE DESCENT INTO  
AUTHORITARIANISM



---

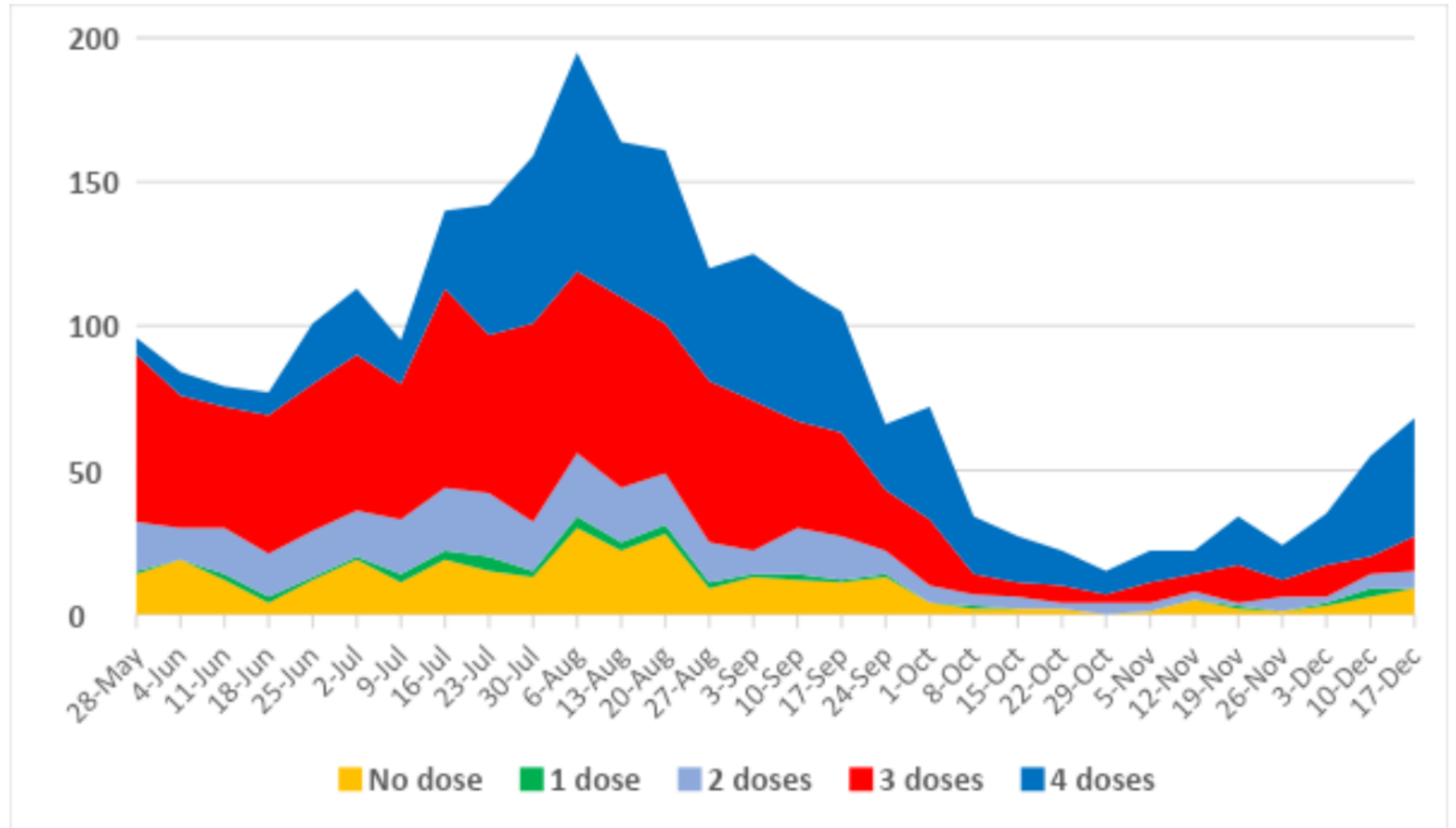
# A PANDEMIC OF VACCINES





**Figure 3: NSW Covid metrics by vaccination status, 22 May–17 December 2022**  
 Source: NSW Health, [Weekly Surveillance Reports](#).

**Figure 4: NSW weekly Covid-related deaths by vaccination status, 22 May–17 December 2022**



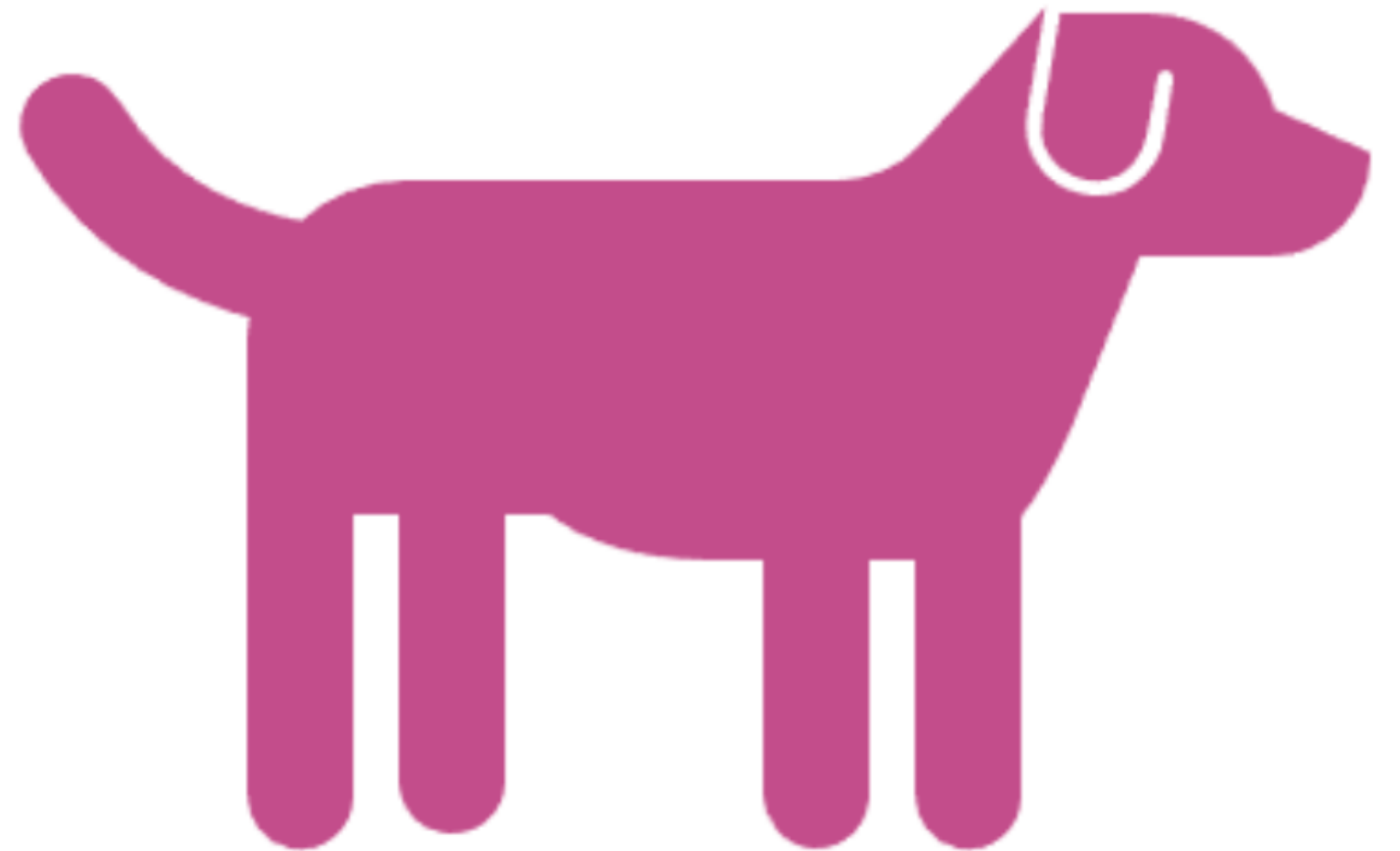
COMPLIANCE  
BECAME A MORAL  
CRUSADE



The Indelible Stain of Djokovic's Shameful Treatment



REGULATORS:  
FROM PUBLIC  
HEALTH  
WATCHDOGS TO  
PHARMA POODLES





---

THE WHO-  
CENTRED  
ARCHITECTUR  
E OF GLOBAL  
HEALTH  
GOVERNANCE



World Health  
Organization

human  
reproduction  
programme  
**hrp.**  
research for impact  
UNDP · UNFPA · UNICEF · WHO · WORLD BANK



# Abortion care guideline

## Authority on Biology?

“a woman, girl or other pregnant person”

“pregnant person” occurs 65 times in the 200-page booklet





## Sense of Humour?

- “In this guideline, we recognize that most of the available evidence on abortion can be assumed to be derived from research among study populations of cisgender women, and we also recognize that cisgender women, transgender men, nonbinary, gender-fluid and intersex individuals with a female reproductive system and capable of becoming pregnant may require abortion care. To be concise and facilitate readability of this guideline ...” (p. xxii)

A close-up photograph of a camera lens, showing the intricate details of the glass elements and the metal housing. The lens is positioned on the left side of the frame, with its front element prominently displayed. The background is a soft, out-of-focus bokeh of purple and blue lights, creating a dreamy and artistic atmosphere. The text "A PANDEMIC OF MEDIA MALFEASANCE" is overlaid in white, bold, sans-serif font across the center of the image, with a thin white horizontal line underneath it.

# A PANDEMIC OF MEDIA MALFEASANCE



COVID AND CLIMATE CATASTROPHISM



# STATE POWER AND COVID CRIMES

---



---

## ACCOUNTABILITY AND JUSTICE

***To end childhood health epidemics by working aggressively to eliminate harmful exposures, hold those responsible accountable and establish safeguards to prevent future harm.***

Children's  
Health Defense  
AUSTRALIA CHAPTER

**Lunch**  
**recommence 1:40 pm**

